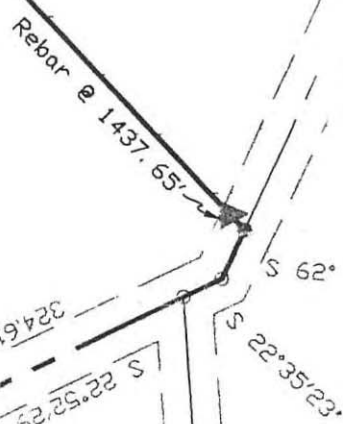


Part 15 A. Hoop
103 Pg. 567
7 Acres

N 49°23'30" E
1460.08'



See Detail A

①

25.133 Acres

Parcel 1
Original 49.71 Acres

N 88°18'39" W
1536.97'

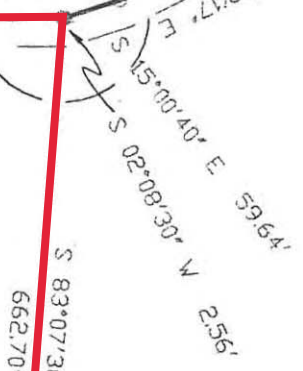
②

33.671 Acres

(25.133 Ac.)

(8.538 Ac.)

S 02°08'30" W
592.23'



③

8.538 Acres

Parcel 2
Original 17.09 Acres

Rebar @ 17.25'
Rebar @ 18.82'
S 87°27'58" E
650.73'

Thomas Lykins, Revocable T
D. R. Vol. 339 Pg. 80
Orig. 121 Acres

60' R/W

S 13°10'12" W
544.34'

S 03°10'12" W
542.11'

Scott
D. R. Vol. 44

ALL
ND E