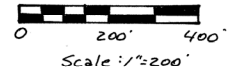


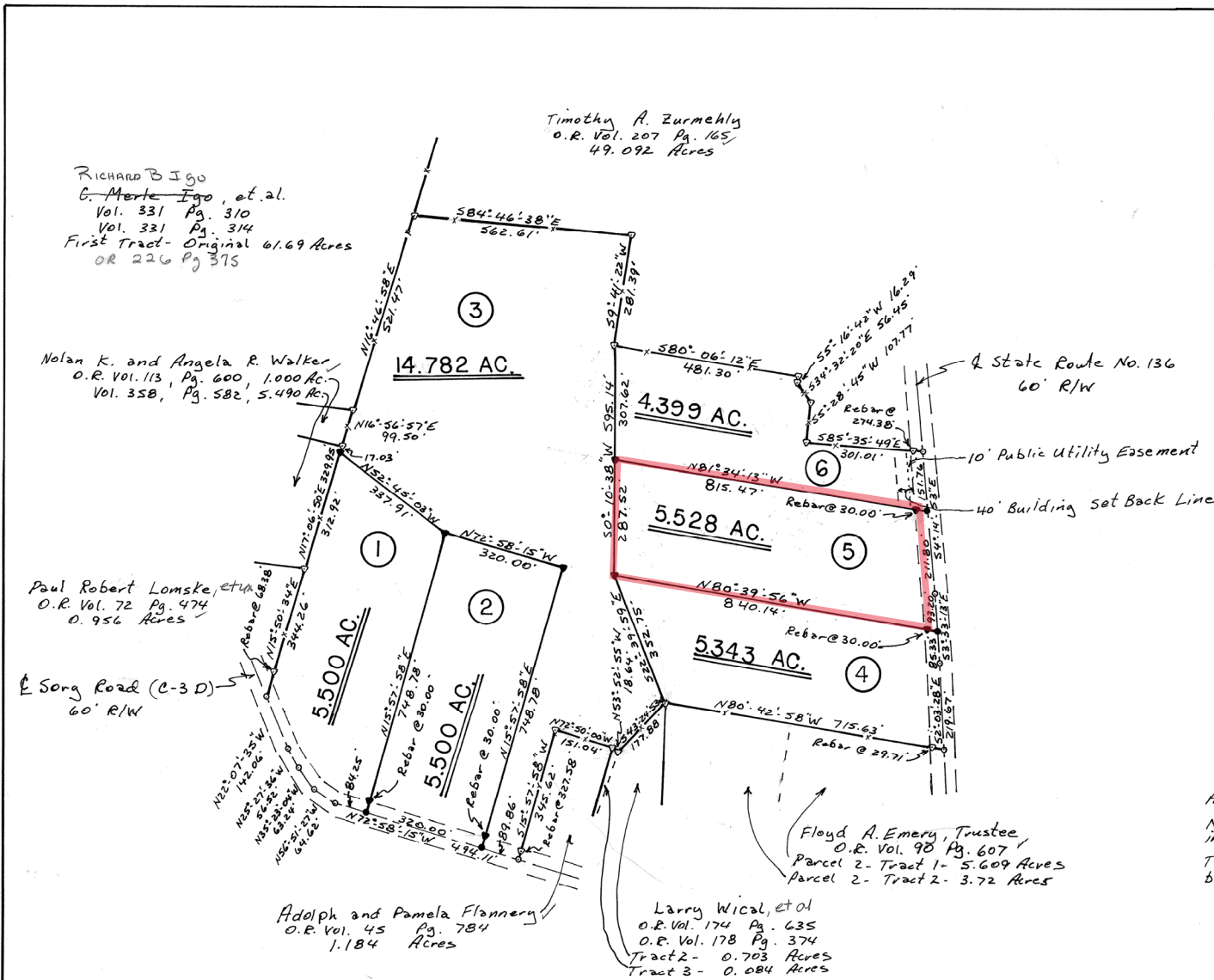


Bearings are based on the N72°58'15"W line as recorded, 14. O.R. Vol. 207, Pg. 141, Exhibit A, Parcel 2, H.C.D.R.



- Legend:
- Spike (Found)
 - ⊙ 5/8" Rebar (Found)
 - Spike (Set)
 - ⊖ 5/8" Rebar (Set)
 - Fence generally on or near the property line.

All monuments found or set are in good condition.
 No evidence of occupation exists along property lines indicated by solid lines.
 The above listed deed records were used as a basis for carrying out the work.



RICHARD B IGO
 G. Merle Igo, et al.
 Vol. 331 Pg. 310
 Vol. 331 Pg. 314
 First Tract- Original 61.69 Acres
 OR 226 Pg 375

Timothy A. Zurmehly
 O.R. Vol. 207 Pg. 165
 49.092 Acres

Nolan K. and Angela R. Walker
 O.R. Vol. 113, Pg. 600, 1,000 Ac.
 Vol. 358, Pg. 582, 5,490 Ac.

Paul Robert Lomske, et al.
 O.R. Vol. 72 Pg. 474
 0.956 Acres

E Song Road (C-3 D)
 60' R/W

Adolph and Pamela Flannery
 O.R. Vol. 45 Pg. 784
 1.184 Acres

Larry Wical, et al
 O.R. Vol. 174 Pg. 635
 O.R. Vol. 178 Pg. 374
 Tract 2 - 0.703 Acres
 Tract 3 - 0.084 Acres

Floyd A. Emery, Trustee
 O.R. Vol. 98 Pg. 607
 Parcel 2- Tract 1- 5.609 Acres
 Parcel 2- Tract 2- 3.72 Acres

Survey By: Gerald Hart Wallingford
 P.L.S. 6658



G. H. Wallingford Co.
 333 Stonewall Road
 Peables, Ohio 45660
 (937) 587-3428

Ernest L., Sr., and Pamela K. Lamb
 Concord Township, Highland County - Ohio
 Part of V.M.S. No. 733
 41.052 Acres
 O.R. Vol. 207 Pg. 141
 Original 41.035 Acres
 Exhibit A - Parcel 2
 Scale: 1"=200'
 August 16, 1999