

599-B  
Vol 9, Pg 223

BEARINGS ARE BASED UPON THE RECORD BEARING  
(N 61°06'40" E) OF THE CENTERLINE OF CHESTNUT  
ROAD ACCORDING TO A 15.921 ACRES TRACT AS  
FOUND IN O.R. 283, PAGE 159.

SECOND TRACT  
ORIG. 88 Ac., 145 Sq. P.

200100004508  
Filed for Record in  
HIGHLAND COUNTY, OHIO  
DWIGHT "IKE" HODSON  
06-07-2001 11:07 am.  
PLAT 86.40

FIVE STAR CO.  
O.R. 334, PAGE 264  
SECOND TRACT  
ORIG. 88 Ac., 145 Sq. P.  
THIRD TRACT  
ORIG. 75 Ac.

THIRD TRACT  
ORIG. 75 Ac.

ACCESS ONTO CHESTNUT  
ROAD FROM LOT No. 18 SHALL  
BE THROUGH THE ACCESS  
EASEMENT ON LOT No. 19.

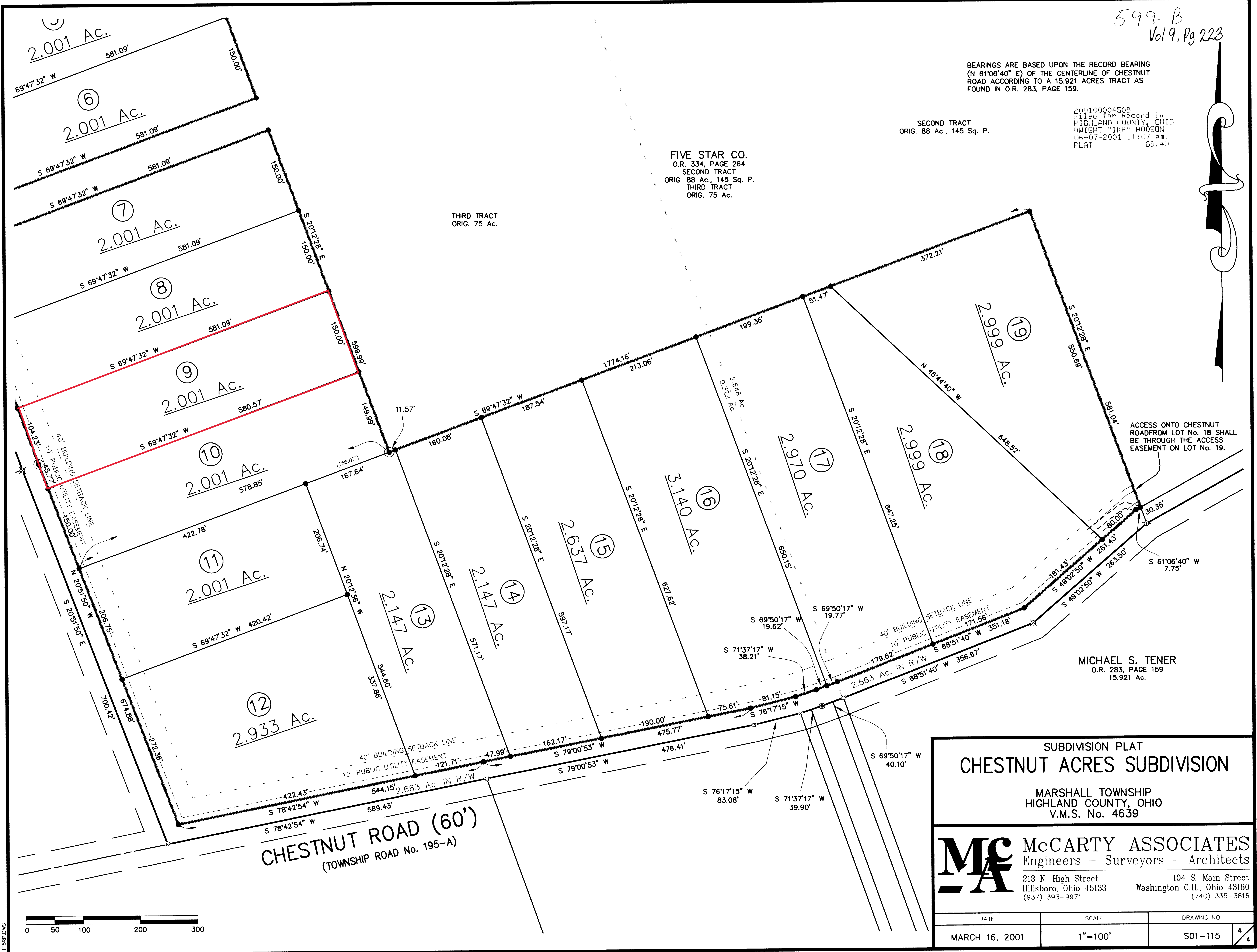
MICHAEL S. TENER  
O.R. 283, PAGE 159  
15.921 Ac.

SUBDIVISION PLAT  
CHESTNUT ACRES SUBDIVISION

MARSHALL TOWNSHIP  
HIGHLAND COUNTY, OHIO  
V.M.S. No. 4639

**McA** McCARTY ASSOCIATES  
Engineers - Surveyors - Architects  
213 N. High Street Hillsboro, Ohio 45133 (937) 393-9971  
104 S. Main Street Washington C.H., Ohio 43160 (740) 335-3816

DATE	SCALE	DRAWING NO.
MARCH 16, 2001	1"=100'	S01-115 4/4



D:\1158P.DWG