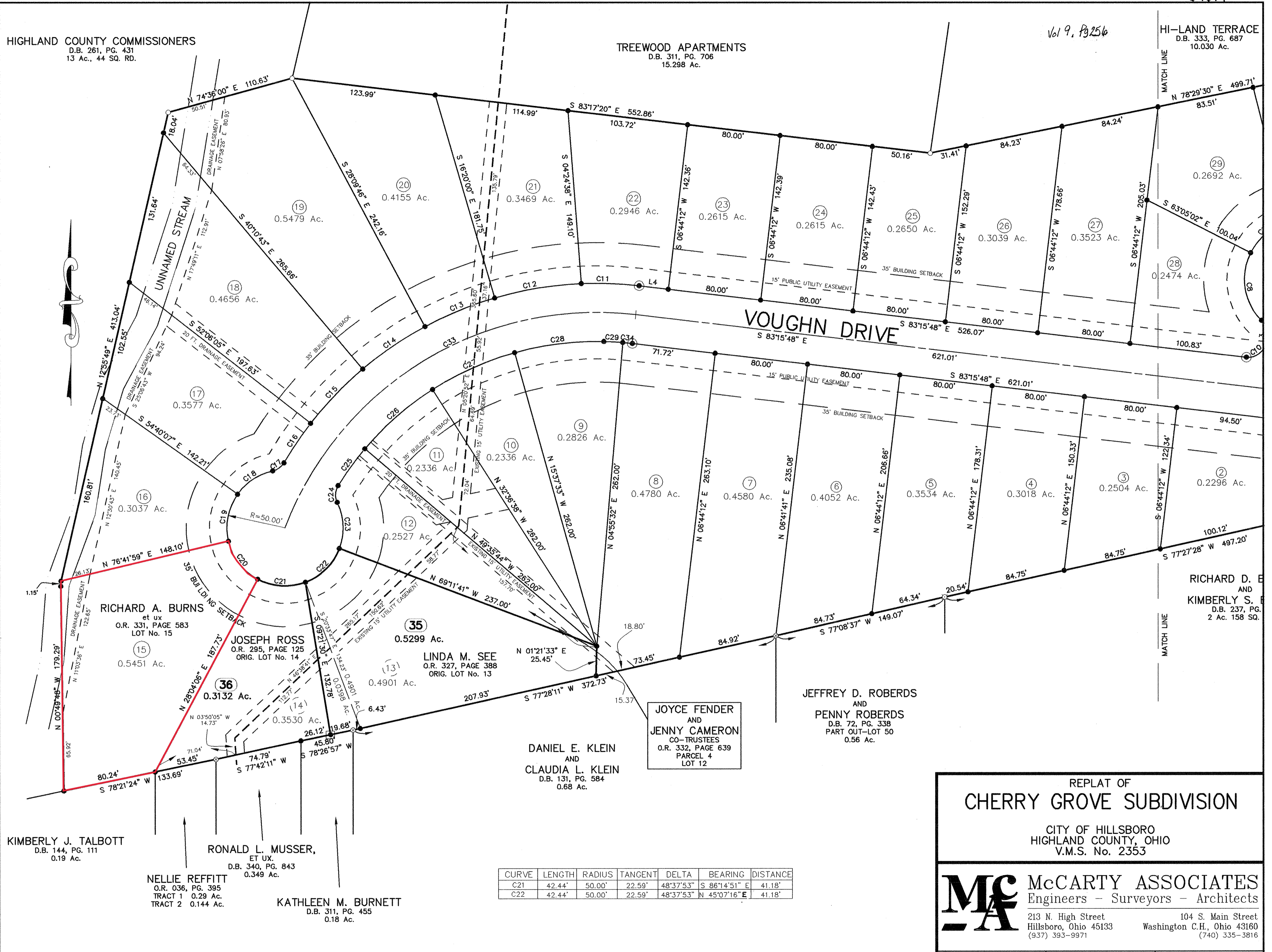


HIGHLAND COUNTY COMMISSIONERS  
D.B. 261, PG. 431  
13 Ac., 44 SQ. RD.

TREWOOD APARTMENTS  
D.B. 311, PG. 706  
15.298 Ac.

HI-LAND TERRACE  
D.B. 333, PG. 687  
10.030 Ac.



RICHARD A. BURNS  
et ux  
O.R. 331, PAGE 583  
LOT No. 15  
0.5451 Ac.

JOSEPH ROSS  
O.R. 295, PAGE 125  
ORIG. LOT No. 14  
0.3132 Ac.

LINDA M. SEE  
O.R. 327, PAGE 388  
ORIG. LOT No. 13  
0.4901 Ac.

DANIEL E. KLEIN  
AND  
CLAUDIA L. KLEIN  
D.B. 131, PG. 584  
0.68 Ac.

JOYCE FENDER  
AND  
JENNY CAMERON  
CO-TRUSTEES  
O.R. 332, PAGE 639  
PARCEL 4  
LOT 12

JEFFREY D. ROBERDS  
AND  
PENNY ROBERDS  
D.B. 72, PG. 338  
PART OUT-LOT 50  
0.56 Ac.

RICHARD D. E.  
AND  
KIMBERLY S.  
D.B. 237, PG.  
2 Ac. 158 SQ.

KIMBERLY J. TALBOTT  
D.B. 144, PG. 111  
0.19 Ac.

RONALD L. MUSSER,  
ET UX.  
D.B. 340, PG. 843  
0.349 Ac.

NELLIE REFFITT  
O.R. 036, PG. 395  
TRACT 1 0.29 Ac.  
TRACT 2 0.144 Ac.

KATHLEEN M. BURNETT  
D.B. 311, PG. 455  
0.18 Ac.

CURVE	LENGTH	RADIUS	TANGENT	DELTA	BEARING	DISTANCE
C21	42.44'	50.00'	22.59'	48°37'53"	S 86°14'51" E	41.18'
C22	42.44'	50.00'	22.59'	48°37'53"	N 45°07'16" E	41.18'

### REPLAT OF CHERRY GROVE SUBDIVISION

CITY OF HILLSBORO  
HIGHLAND COUNTY, OHIO  
V.M.S. No. 2353



**McCARTY ASSOCIATES**  
Engineers - Surveyors - Architects

213 N. High Street  
Hillsboro, Ohio 45133  
(937) 393-9971

104 S. Main Street  
Washington C.H., Ohio 43160  
(740) 335-3816



DATE	SCALE	DRAWING NO.
MAY 21, 2001	1"=50'	S01-194