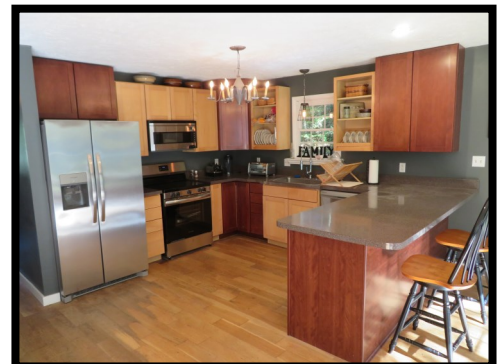


6939 Erwin Road

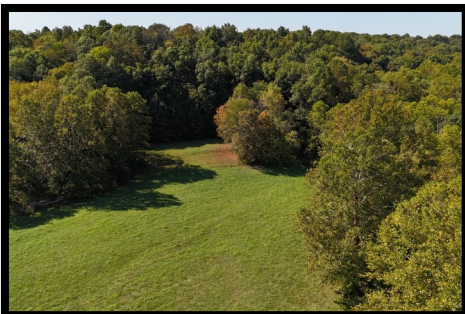


Near the southern edge of Hillsboro, this extensively renovated 3 bedroom, 2 ½ bath two story farmhouse boasts a great room floor plan and hardwood floor! A modern kitchen, stainless steel appliances, a bar and pantry has been neatly designed! Features include a corner brick hearth and soapstone woodstove that can provide a secondary heat source and cozy atmosphere! Two master bedroom suites are ideal for the family or when guests come calling! Hardwood floors, inlaid ceramic tile, walk-in shower, skylight, walk-in closets and natural woodwork create an old farm feel with all the conveniences of town nearby! Amenities worthy of mention are a covered front porch, open decks, generous patio and firepit perfect for parties and gatherings! An outdoor wood boiler and portable woodshed gives choices for heat sources! Enjoy peace of mind in the event of power outages with your propane/gasoline backup generator! A 24x30 pole barn garage/shop and lean-to with pens and a newer 24x56 pole barn can serve a multitude of uses! The log sided doghouse is perfect for family pets! A private 17.129 acre valley setting surrounded by lush woodlands and green pastures! A scenic highlight is 30 ft. wide, flowing Rocky Fork Creek with stone stair steps along the property edge creates camping and personal recreation opportunities! An additional building site ready for construction has been cleared. Many recent updates and professional landscaping complete this package! Totally secluded with no close neighbors, enter a world of your own minutes from town!



937-393-7222

www.TheDickeyGroup.com



Jeff Dickey ABR, CRS, GRI, e-PRO

8990 State Route 785

Hillsboro, OH 45133

937-393-7222

Jeff@TheDickeyGroup.com

FREE Visual Tour on our Website

www.TheDickeyGroup.com



"Systems to Create a Moving Experience"™